



CONNECT AND PROTECT

**Stainless Steel Sequestr
External Disconnect Package,
Type 4X**


nVent

HOFFMAN

HOFFMAN Protects

WORLD-CLASS ENCLOSURES

In applications ranging from construction to telecommunications, from harsh outdoor control environments to sanitary manufacturing conditions, from industrial to institutional, nVent HOFFMAN is the preferred brand of enclosures, setting the standard for excellence and service worldwide.

HOFFMAN design engineers are deployed globally in our facilities in North America, Latin America, Europe and Asia to provide technical support to customers and our internal processes and systems allow the seamless transfer of design and production documentation between design and manufacturing centers. Whether it's a standard catalog item or a completely custom design we can support our customers needs in all parts of the world.



Stainless Steel Sequestr External Disconnect Package

STAINLESS STEEL SEQUESTR EXTERNAL DISCONNECT PACKAGE, TYPE 4X

The Stainless Steel Sequestr External Disconnect Enclosure package helps mitigate arc flash occurrences when working on interior components by isolating incoming power from the main enclosure. Manufactured from 304 stainless steel, it provides protection from non-corrosive or mildly corrosive elements in both indoor and outdoor environments.

A package includes a main enclosure and a Sequestr box. Sequestr boxes can be ordered separately to retrofit existing enclosures. The disconnect switch and fuse block/circuit breaker are mounted in the external enclosures, with terminal connections to bring power to the main enclosure.



Stainless Steel Sequestr External Disconnect Package

STAINLESS STEEL SEQUESTR EXTERNAL DISCONNECT PACKAGE, TYPE 4X



FEATURES

- Main enclosure is manufactured from 12 gauge 304 stainless steel
- Sequestr enclosure is made from 14 gauge 304 stainless steel
- Seams continuously welded and ground smooth
- Interlocks doors of main control cabinet when disconnect switch is powered ON
- Mechanical interlock on main control enclosure activated by master door, preventing slave door from being opened first
- Provision for pass-through power into the main enclosure
- Preferred Disconnect cutout
- Quarter-turn, screwdriver slot latch on Sequestr Enclosure
- Heavy-duty 3-point latching mechanism operated by 316L stainless steel PowerGlide padlocking handle on all main enclosure doors
- Heavy-duty continuous hinges
- Grounding studs on body
- Bonding provision on door
- Conductive back panel included in Sequestr External Disconnect Enclosure
- Optional back panel for main control cabinet for maximum ordering flexibility
- Sequestr External Disconnect Enclosure is shipped unattached for easy disconnect installation

FINISH

Stainless steel enclosures are unpainted. Sides and body have smooth number four brushed finish. Optional white mild steel panels or conductive panels.

INDUSTRY STANDARDS

UL 508A Listed 508; Type 3R, 4, 4X, 12; File No. E61997
cUL Listed per CSA C22.2 No. 94; Type 3R, 4, 4X, 12;
File No. E61997

NEMA/EEMAC Type 3R, Type 4, 4X, 12
CSA File No. 42186: Type 4, 4X, 12
IEC 60529, IP66
Meets NEMA Type 3RX requirements

ACCESSORIES

Electric Heater
Compact Cooling Fans
Floor Stand Kit
PaneLite Enclosure Lights

MODIFICATION AND CUSTOMIZATION

HOFFMAN excels at modifying and customizing products to your specifications. Contact your local HOFFMAN sales office or distributor for complete information.

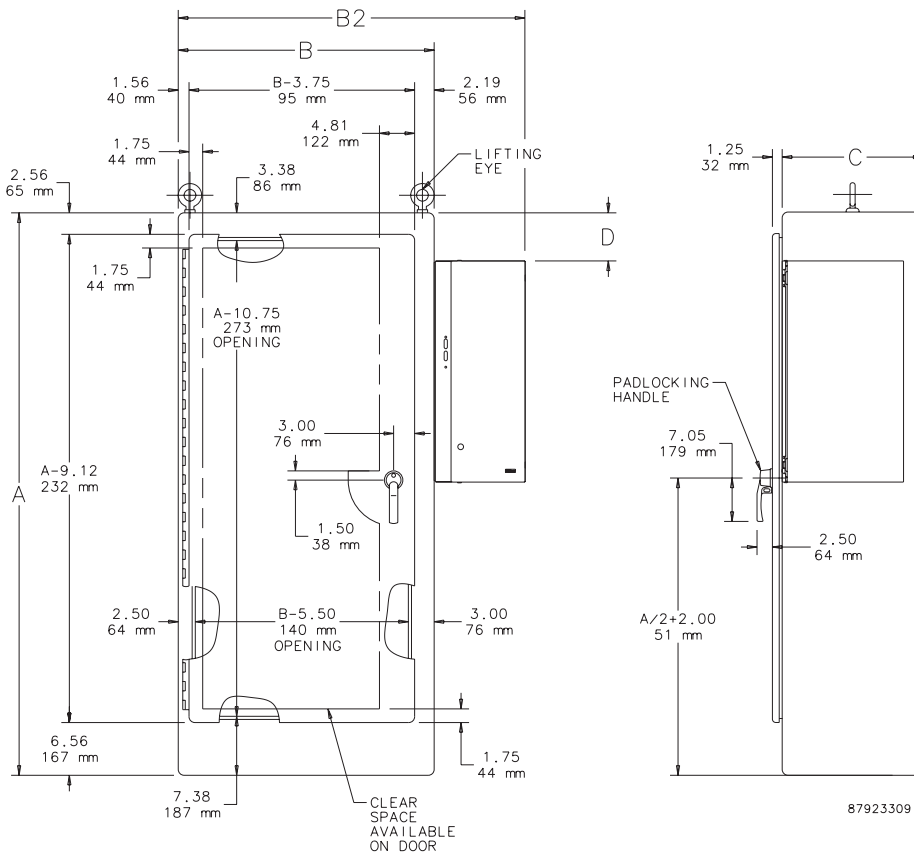
BULLETIN: A28SX

Stainless Steel Sequestr External Disconnect Package

STANDARD PRODUCT ONE-DOOR ENCLOSURE

Catalog Number	AxBxC in./mm	B2 in./mm	D in./mm	Panel	Conductive Panel	Panel size in./mm
A72XD2818SSFTCLP	72.12 x 28.25 x 18.12 1832 x 718 x 460	42.25 1073	0 0	A72PM28	A72PM28G	60.00 x 21.75 1524 x 552
A72XD3418SSFTCLP	72.12 x 34.25 x 18.12 1832 x 870 x 460	48.25 1226	0 0	A72PM34	A72PM34G	60.00 x 27.75 1524 x 705
A72XD4018SSFTCLP	72.12 x 40.25 x 18.12 1832 x 1022 x 460	54.25 1378	0 0	A72PM40	A72PM40G	60.00 x 33.75 1524 x 857
A84XD4018SSFTCLP	84.12 x 40.25 x 18.12 2137 x 1022 x 460	54.25 1378	6.00 152	A84PM40	A84PM40G	72.00 x 33.75 1829 x 857
A90XD4018SSFTCLP	90.12 x 40.25 x 18.12 2289 x 1022 x 460	54.25 1378	9.00 229	A90PM40	A90PM40G	78.00 x 33.75 1981 x 857
A90XD4020SSFTCLP	90.12 x 40.25 x 20.12 2289 x 1022 x 511	54.25 1378	9.00 229	A90PM40	A90PM40G	78.00 x 33.75 1981 x 857
A84XD4024SSFTCLP	84.12 x 40.25 x 24.12 2137 x 1022 x 613	54.25 1378	6.00 152	A84PM40	A84PM40G	72.00 x 33.75 1829 x 857
A90XD4024SSFTCLP	90.12 x 40.25 x 24.12 2289 x 1022 x 613	54.25 1378	9.00 229	A90PM40	A90PM40G	78.00 x 33.75 1981 x 857

B dimension is large enclosure without External Disconnect Enclosure.
 B2 dimension is overall size including External Disconnect Enclosure.
 Purchase panels separately.

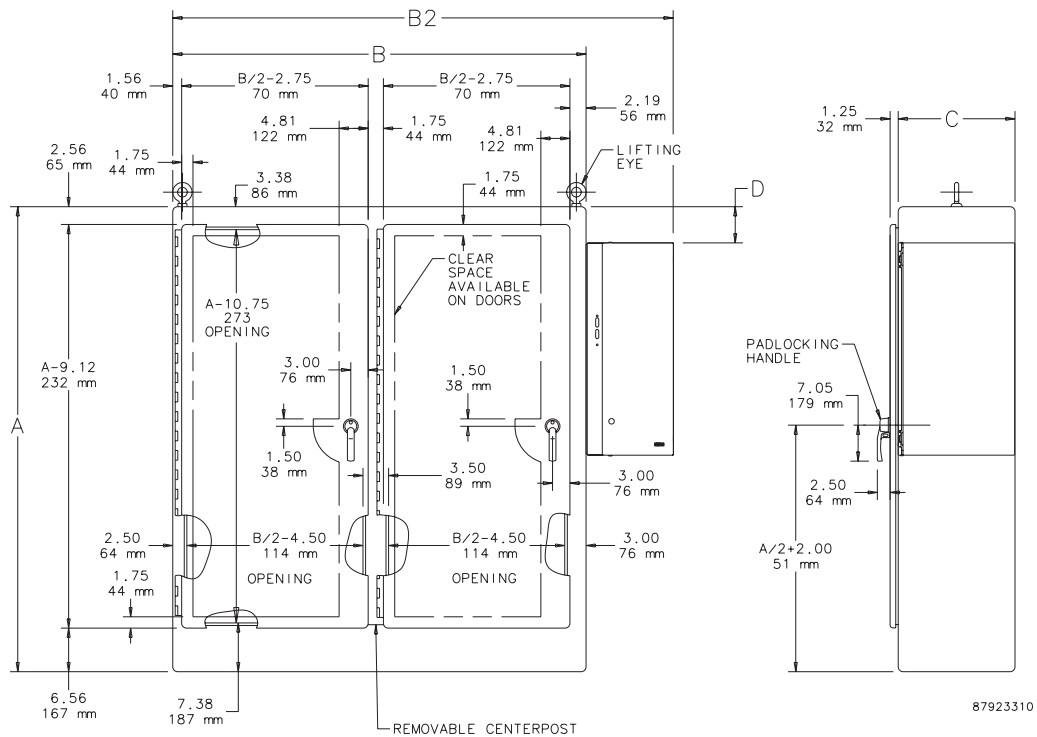


Stainless Steel Sequestr External Disconnect Package

STANDARD PRODUCT TWO-DOOR ENCLOSURE

Catalog Number	AxBxC in./mm	B2 in./mm	D in./mm	Panel	Conductive Panel	Panel size in./mm
A72XD5418SSFTCLP	72.12 x 54.50 x 18.12 1832 x 1384 x 460	68.50 1740	0 0	A72PM54	A72PM54G	60.00 x 48.00 1524 x 1219
A72XD6618SSFTCLP	72.12 x 66.50 x 18.12 1832 x 1689 x 460	80.50 2045	0 0	A72PM66	A72PM66G	60.00 x 60.00 1524 x 1524
A72XD7818SSFTCLP	72.12 x 78.50 x 18.12 1832 x 1994 x 460	92.50 2350	0 0	A72PM78	A72PM78G	60.00 x 72.00 1524 x 1829
A84XD7818SSFTCLP	84.12 x 78.50 x 18.12 2137 x 1994 x 460	92.50 2350	6.00 152	A84PM78	A84PM78G	72.00 x 72.00 1829 x 1829
A90XD7818SSFTCLP	90.12 x 78.50 x 18.12 2289 x 1994 x 460	92.50 2350	9.00 229	A90PM78	A90PM78G	78.00 x 72.00 1981 x 1829
A90XD7820SSFTCLP	90.12 x 78.50 x 20.12 2289 x 1994 x 511	92.50 2350	9.00 229	A90PM78	A90PM78G	78.00 x 72.00 1981 x 1829
A72XD7824SSFTCLP	72.12 x 78.50 x 24.12 1832 x 1994 x 613	92.50 2350	0 0	A72PM78	A72PM78G	60.00 x 72.00 1524 x 1829
A84XD7824SSFTCLP	84.12 x 78.50 x 24.12 2137 x 1994 x 613	92.50 2350	6.00 152	A84PM78	A84PM78G	72.00 x 72.00 1829 x 1829
A72XD7824SSFTCLP	90.12 x 78.50 x 24.12 2289 x 1994 x 613	92.50 2350	9.00 229	A90PM78	A90PM78G	78.00 x 72.00 1981 x 1829

B dimension is large enclosure without External Disconnect Enclosure.
 B2 dimension is overall size including External Disconnect Enclosure.
 Purchase panels separately.

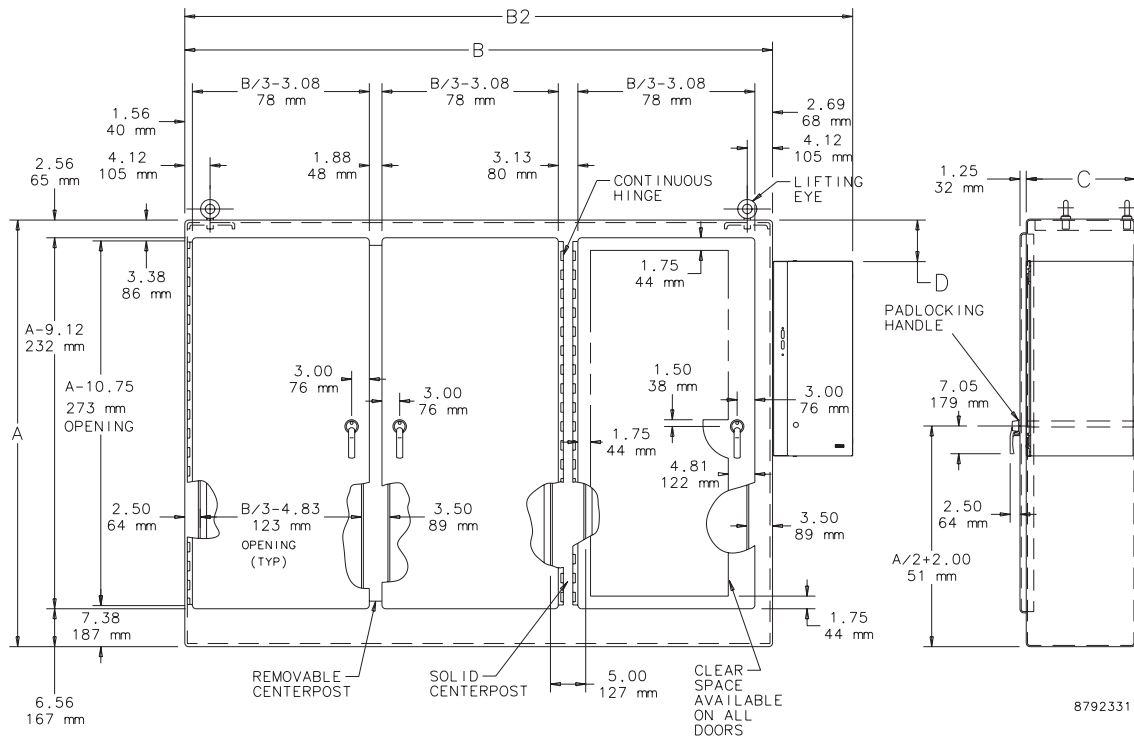


Stainless Steel Sequestr External Disconnect Package

STANDARD PRODUCT THREE-DOOR ENCLOSURE

Catalog Number	AxBxC in./mm	B2 in./mm	D in./mm	Large Panel/ Small Panel	Large Conductive Panel/Small Conductive Panel	Large Panel Size in./mm	Small Panel Size in./mm
A72XD3EQ18SSFTCLP	72.12 x 100.75 x 18.12 1832 x 2559 x 460	114.75 2915	0 0	A72PM66/ A72PM34	A72PM66G/ A72PM34G	60.00 x 60.00 1524 x 1524	60.00 x 27.75 1524 x 705
A72XD3EW18SSFTCLP	72.12 x 118.75 x 18.12 1832 x 3016 x 460	132.75 3372	0 0	A72PM78/ A72PM40	A72PM78G/ A72PM40G	60.00 x 72.00 1524 x 1829	60.00 x 33.75 1524 x 857
A84XD3EW18SSFTCLP	84.12 x 118.75 x 18.12 2137 x 3016 x 460	132.75 3372	6.00 152	A84PM78/ A84PM40	A84PM78G/ A84PM40G	72.00 x 72.00 1829 x 1829	72.00 x 33.75 1829 x 857
A84XD3EW24SSFTCLP	84.12 x 118.75 x 24.12 2137 x 3016 x 613	132.75 3372	6.00 152	A84PM78/ A84PM40	A84PM78G/ A84PM40G	72.00 x 72.00 1829 x 1829	72.00 x 33.75 1829 x 857
A90XD3EW24SSFTCLP	90.12 x 118.75 x 24.12 2289 x 3016 x 613	132.75 3372	9.00 229	A90PM78/ A90PM40	A90PM78G/ A90PM40G	78.00 x 72.00 1981 x 1829	78.00 x 33.75 1981 x 857

B dimension is large enclosure without External Disconnect Enclosure.
 B2 dimension is overall size including External Disconnect Enclosure.
 Purchase panels separately.



OPTIONAL TERMINAL PLATES

Catalog Number	For
ATBP3060	30 and 60 amp switches
ATBP100	100 amp switches
ATBP200	200 amp switches

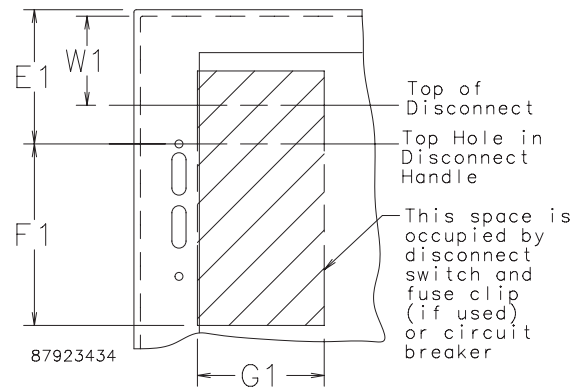
Stainless Steel Sequestr External Disconnect Package

DISCONNECT MOUNTING SPACE

Disconnects are located by dimension E1. Wiring space W1 is available when disconnect is installed in the enclosure. See the HOFFMAN Specifier's Guide Technical Information chapter for E1 Spacing by Enclosure Height for various disconnect switch manufacturers.

Refer to **National Electrical Code® 2008** article 430.10(B) for wiring space required for line side conductors to be connected to disconnect. **Verify your application to determine if wiring space is adequate.**

Consult Space Occupied by Disconnect drawing to determine whether the disconnect device you are using will fit the enclosure size you have selected.



Consult disconnect manufacturer or see Disconnect Ordering Information at hoffmanonline.com under Technical Resources for F1 and G1 dimensions of various brands of disconnects.

STAINLESS STEEL SEQUESTR PREFERRED-CUTOUT OVERVIEW

Schneider Square D® Class 9422 disconnect switches with flange-mount left-hand variable-depth operating mechanisms and Class 9422 flange-mount left-hand variable-depth operating mechanisms for circuit breakers. These enclosures will NOT accept Square D Class 9422 bracket-mounted disconnect devices, Class 9422TGI or TG2 devices



APPLICATION

The Sequestr enclosures have the standard preferred cutout on the left-hand flange. They accept left-hand 1494V Allen-Bradley variable-depth devices, up to 200A, and left-hand Class 9422 Square D variable-depth devices, up to 200A.

Sequestr cutouts are designed to house the following:

Allen-Bradley Bulletin 1494V DSX left-hand disconnect switches with flange-mount variable depth operating mechanisms and Bulletin 1494V flange-mount variable-depth operating mechanisms for circuit breakers.

These enclosures will NOT accept Allen-Bradley Bulletin 1494F disconnect devices or Bulletin 1494D circuit breaker operators.

ORDERING

Disconnect switch (or circuit breakers), operating handle and operating mechanism are not furnished with enclosure. Consult the HOFFMAN Specifier's Guide Technical Information chapter for wire bend information and HOFFMANonline.com for disconnect manufacturer information. Consult drawings to match the disconnect device you are using with the correct enclosure size.

A COMPLETE ASSEMBLY CONSISTS OF:

- An enclosure
- Door interlock brackets
- 3-point door latching system
- Instructions to locate and install disconnect
- Grounding hardware kit
- Conductive panel in Sequestr External
- Disconnect Enclosure

Stainless Steel Sequestr External Disconnect Package

STAINLESS STEEL SEQUESTR EXTERNAL DISCONNECT ENCLOSURE, TYPE 4X



INDUSTRY STANDARDS

UL 508A Listed; Type 3R, 4, 4X, 12; File No. E61997
cUL Listed per CSA C22.2 No. 94; Type 4, 4X, 12;
File No. E61997

NEMA/EEMAC Type 3R, 4, 4X, 12
CSA File No. 42186: Type 3R, 4, 4X, 12
IEC 60529, IP66

APPLICATION

Retrofit disconnect enclosures to isolate incoming power and help mitigate arc flash occurrences by moving the disconnect switch to the Sequestr enclosure. Power is passed-through to the main enclosure.

FEATURES

- Interlocks with doors of main control cabinet when the disconnect switch is powered ON
- Maintains UL Type 4X rating
- Provision for pass-through power into the main cabinet—blank plate for customer modification
- Preferred disconnect cutout
- Quarter-turn screwdriver slot and 3-point latch
- Hidden hinges
- Bonding provision on door
- Conductive back panel included
- Installation hardware and templates included

SPECIFICATIONS

- 14 gauge 304 steel
- Continuously welded and ground seams all around
- Hinged on right side

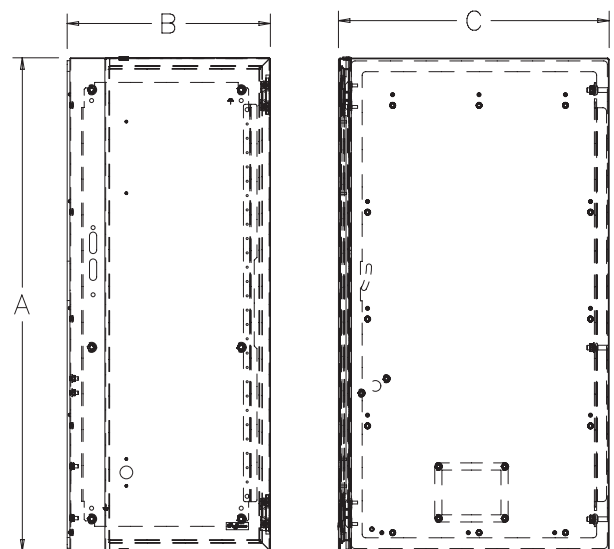
FINISH

- Smooth #4 brushed finish
- Included back panel has conductive finish

ACCESSORIES

See also Accessories.
Industrial Corrosion Inhibitors
Touch-Up Paint

BULLETIN: A70DS



87923295

Stainless Steel Sequestr External Disconnect Package

STANDARD PRODUCT

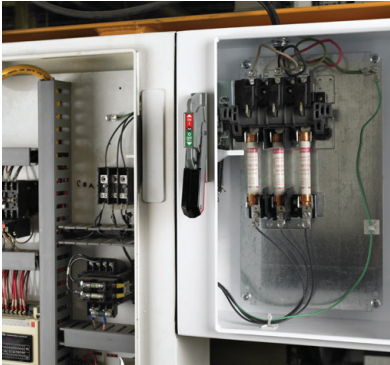

Catalog Number	AxBxC in.	AxBxC mm
AXD18SS	34.45 x 14.00 x 18.12	875 x 356 x 460
AXD20SS	34.45 x 14.00 x 20.12	875 x 356 x 511
AXD24SS	34.45 x 14.00 x 24.12	875 x 356 x 613

HOFFMAN Stainless Steel Sequestr External Disconnect Package, Type 4X

Catalog Number	Feature	Benefit
	<ul style="list-style-type: none"> • Main enclosure is manufactured from 12 gauge 304 stainless steel • Sequestr enclosure is made from 14 gauge 304 stainless steel • Three style of main enclosures: 1 door, 2 door and 3 door • Three different sizes of external Sequestr boxes 	<ul style="list-style-type: none"> • Provides protection from non-corrosive or mildly corrosive elements in both indoor and outdoor environments • Offer flexible options based on customers' applications
	<ul style="list-style-type: none"> • External disconnect enclosure to house disconnect switch, fuses or circuit breakers • There is no live power in the main enclosure when the disconnect is off 	<ul style="list-style-type: none"> • With Sequestr, there is no live power inside the main enclosure when the disconnect is off. PPE is not required after checking for live power on the load side of the disconnect • Provide more space on the main enclosure panel
	<ul style="list-style-type: none"> • Main enclosure door and Sequestr door are interlocked. 	<ul style="list-style-type: none"> • By interlocking the Sequestr door to the main enclosure door, HOFFMAN's solution conforms to all required NFPA 79, IEC 60204, and SAE HS1738 interlocking standards.

Stainless Steel Sequestr External Disconnect Package

HOFFMAN STAINLESS STEEL SEQUESTR EXTERNAL DISCONNECT PACKAGE, TYPE 4X

Catalog Number	Feature	Benefit
	<ul style="list-style-type: none">• Patented interlock mechanism requires that all doors must be closed before main power can be turned on.	<ul style="list-style-type: none">• The Sequestr door must be closed first and then the main enclosure door must be closed before power can be turned on. This sequence is in compliance with existing industry standards (NFPA 79, IEC 60204, and SAE HS1738).
	<ul style="list-style-type: none">• 316L Stainless Steel PowerGlide padlocking door handle with internal 3-point latching system• Seamless, foam-in-place gasket provides continuous sealing surface	<ul style="list-style-type: none">• Secure and seal enclosed equipment from harmful elements or tampering, while maintaining easy access for approved operator

North America

Minneapolis, MN	Tel: +1.763.421.2240
Mexico City, Mexico	Tel: +52.55.5280.1449
Toronto, Canada	Tel: +1.416.289.2770

South America

Sao Paulo, Brazil	Tel: +55.11.5184.2100
Boitura, Brazil	Tel: +55.15.3363.9148

Europe

Betschdorf, France	Tel. +33.3.88.90.64.90
Straubenhardt, Germany	Tel: +49.7082.794.0
Dzierzoniow, Poland	Tel: +48.74.64.63.900
Assago, Italy	Tel: +39.02.5776151.224

Middle East & India

Dubai, United Arab Emirates	Tel: +971.4.378.1700
Bangalore, India	Tel: +91.80.6715.2001

Asia

Shanghai, P.R. China	Tel: +86.21.2412.6943
Singapur	Tel: +65.6768.5800
Shin-Yokohama, Japan	Tel: +81.45.476.0271
Seoul, Korea	Tel: +82.2.2129.7755
Qingdao	Tel: +86.532.8771.6101

FOR MORE INFORMATION AND TO CONTACT US, GO TO: NVENT.COM/HOFFMAN

Our powerful portfolio of brands:

CADDY ERICO HOFFMAN RAYCHEM SCHROFF TRACER



nVent.com/HOFFMAN